



GRASPOINTNER
Sustainable innovation.



Oscar-Niemeyer cultural center, Avilés Spain.

Sustainable Innovation.

Discover BG-Graspointner.

Technology for drainage, railway and road construction.

«Our identity rests
upon two **strong pillars:**
**Innovative Strength &
Environmental
Awareness.»**

A successful business needs a strong identity that grounds it. It shapes the day to day business as much as it helps design a positive future. Our identity rests upon two strong pillars:

**Innovative Strength &
Environmental Awareness.**

Since the founding of BG-Graspointner in 1963, the aspiration to make technologically advanced and sophisticated products defined our daily actions. In the process, our innovative strength has also made something else possible: manufacture products that are not only highly efficient but at the same time environmentally sound. A concern that also originates from our connection with the beautiful nature of our home country Austria.

The aspiration of constant improvement is also reflected in our planning for the future: It is our aspiration, in the medium and long term, to ensure a consistent growth, to enter into new markets worldwide and expand our technological pioneering role. We've chosen this path not without a reason. It is in accordance with our identity – and we want to remain faithful to it also in the future.

With this brochure, we would like to invite you to get to know our business better and learn about our innovative strength as well as our corporate responsibility.

Sincerely,



Klemens R. Wiese
Group Managing Director



Global Champion with family tradition.

In 1961, Friedrich Graspöckner sen. founded the concrete factory Graspöckner as a family business in Oberwang. Since then, a lot has changed: the small-scale manufacturer of concrete goods for the local market has grown into a successful, globally active, medium size company with 250 employees. By now, we have founded 13 foreign subsidiaries and distribute our products to more than 30 countries.

Many changes, one constant.

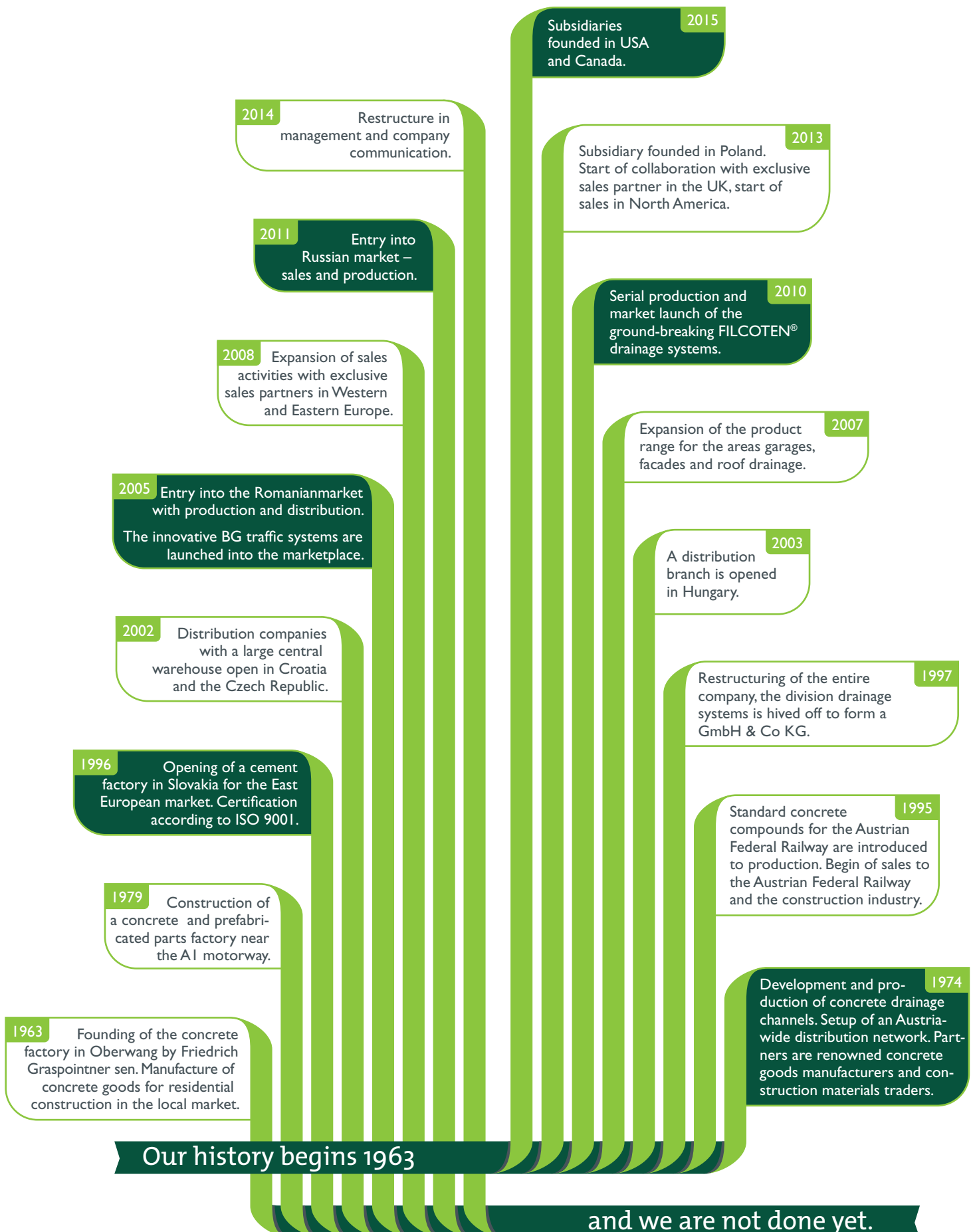
One thing, however, has never changed: BG-Graspöckner is and always will be a family business. Today numerous members of the founding family work in various areas of responsibility within the company – thus keeping up the tradition of our success story.

A family that grows.

And our development has not come to an end: We strive daily to further improve our products and thereby win new, satisfied customers all over the world. After all, a family is happy when it grows.



*One name,
two generations:
Friedrich Graspöckner
Junior and Senior.*



We work with the
power of nature –
and for its **preservation.**



With us environmental protection is not a hollow promise but active corporate culture.

Our view of entrepreneurship is not to look at the profit alone.

The company's success and development will always be closely connected to its responsibility for the community – and for the environment. After all, what will the highest profit be worth if one cannot look into the mirror at the end of the day?

For this reason, the sustainable use of our environment is a central element of our corporate culture and not a mere marketing promise:

- We rely on environmentally friendly production that is just as protective of the environment as the health of our employees.
- We rely on environmentally friendly products that wherever they're built in protect the nature.
- We rely on an increased use of green energy. When manufacturing our FILCOTEN® drainage channels we even use up to 100% renewable energy.



What characterises **innovative technology?**



Maximum performance, maximum sustainability.

Our products reflect what constitutes us as a business: Innovative strength and environmental awareness. But the one is inconceivable without the other:

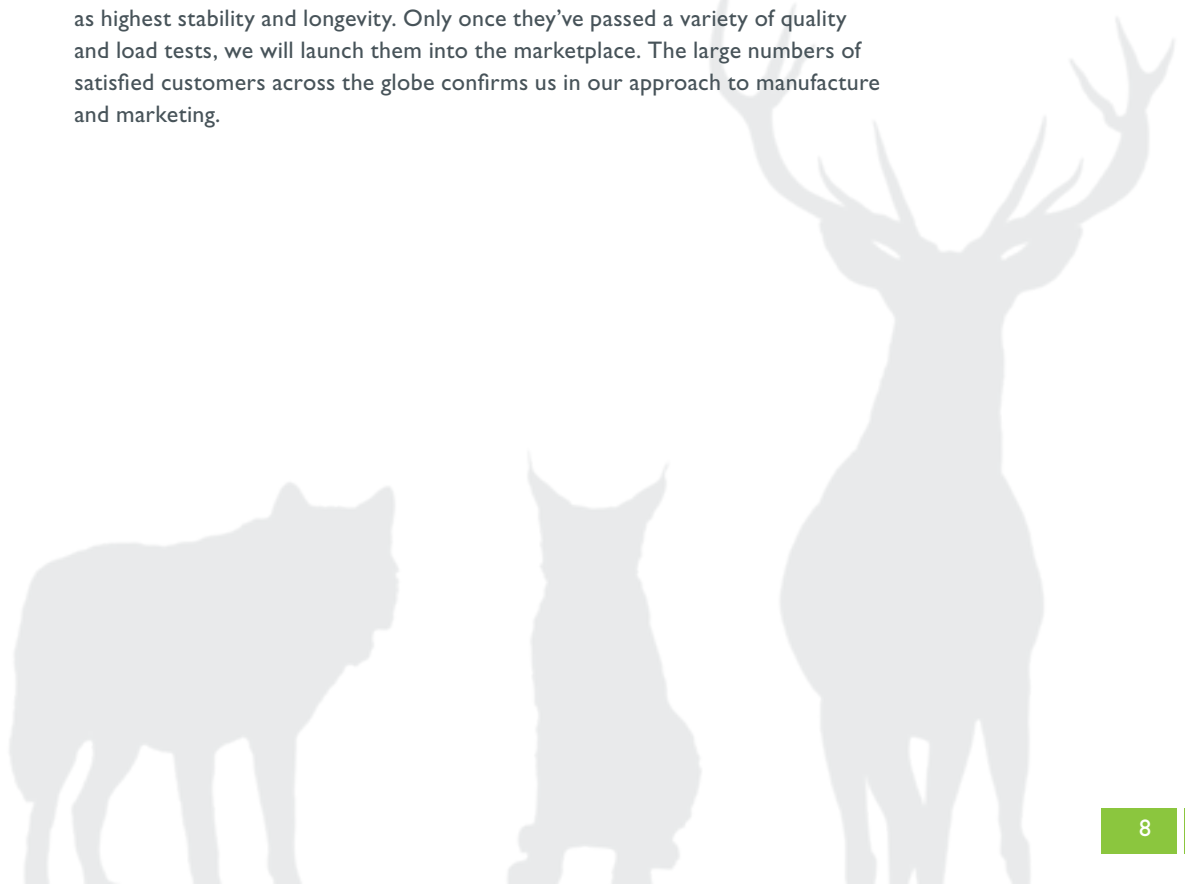
Our engineers develop advanced technologies that combine outstanding, technological characteristics with sustainability. Only our innovative strength allows for this combination – and you will find it in all product ranges from our company:

- Drainage Systems
- Railway Construction
- Traffic Systems



Engineering ingenuity Made in Austria.

Over the following pages, you can gain an idea of true engineering ingenuity Made in Austria. Our products impress with maximum performance as well as highest stability and longevity. Only once they've passed a variety of quality and load tests, we will launch them into the marketplace. The large numbers of satisfied customers across the globe confirms us in our approach to manufacture and marketing.



Bright prospects – regardless of the weather.



Many drainage channels, one principle: perfect in every environment.

What characterises a perfect drainage channel? It's invisible. Because drainage channels only attract attention when they no longer function and the smallest rain shower turns the streets into the most dangerous slide.

True experts stay in the background.

Seen in this way, BG-drainage systems are the most inconspicuous of their kind. They are characterised by highest efficiency, robustness and sustainability in every environment – certified according to ISO 9001 as well as ENI 433 by various independent state institutions. Latest technologies as well as years of experience in development, production and fitting are the reason behind this outstanding quality.

Confidence through quality.

For this reason, leading building products distributors, architects and private persons have relied on our drainage systems for many years. They value our trustworthiness as much as our reliability and the simple, unbureaucratic work processes.

Triply good.

Our drainage systems are available in three product groups:



FILCOTEN® drainage system – innovative to the last fibre.

- unique, innovative technology
- very robust, functional and at the same time outstandingly light
- extremely resource-efficient production by using 100% green energy
- 100% recyclable and environmentally compatible building material
- very versatile: suitable for loads up to class F 900 EN 1433
- with three different rail edge materials and an extensive grating range



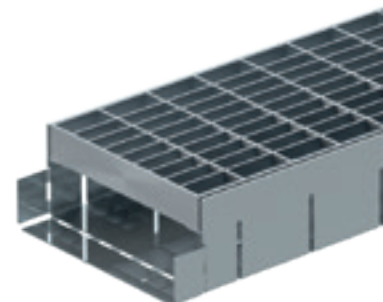
Concrete drainage systems – strength in every environment.

- suitable for all kinds of challenges: from the driveway through to aviation surfaces
- nominal width 100-500
- load class A 15 to F 900, with or without interior gradient
- with cast iron, stainless steel or galvanised steel rail edges as well as grid or cast grate covers



Steel drainage systems – intelligent technologies for special challenges.

- ideal for terraces, facades, flat roofs, car parks and the like
- maximum drainage cross section at low construction height
- with fixed or adjustable height system
- from galvanised or stainless steel



A track record in rising to the challenge.



Railway construction components for maximum efficiency.

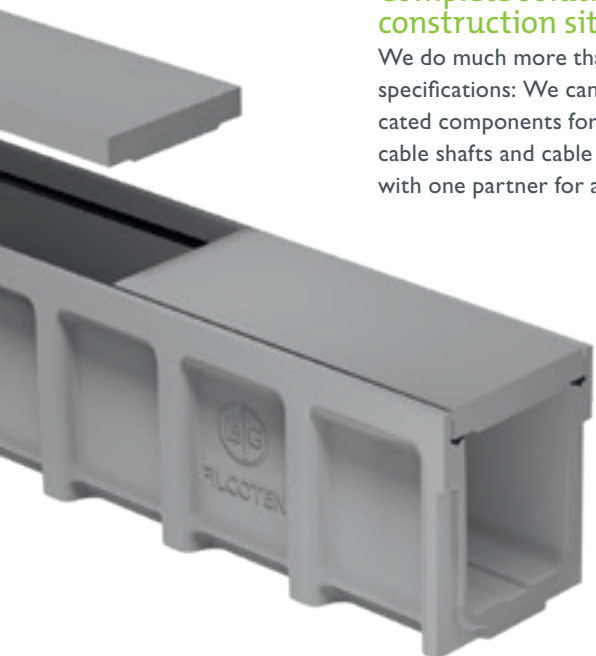
This is railway construction at its most efficient:
Our FILCOTEN® cable trough, part of a prefabricated system of
railway construction components. This system is an economical
solution for all cable conduit and cable laying work along rail tracks
and in and around stations.

Fits into place like a puzzle – functions like finely tuned gear wheels.

Our system can accommodate the entire cable system; it is quick
and therefore exceptionally cost-effective to fit. And how did we
achieve this? By using innovative production methods to produce
high-precision prefabricated components of outstanding quality
– as evidenced by the successful, proven system installed by the
Austrian Federal Railways.

Complete solutions for the entire construction site.

We do much more than manufacturing cable troughs to various
specifications: We can also produce and supply all other prefabricated
components for your railway construction project, such as
cable shafts and cable trough eductors – so you only have to liaise
with one partner for all your construction site supplies.





Because lighter is better: The FILCOTEN® cable trough

Innovation that drives mobility – boasting a low weight, high stability and a smooth surface, the FILCOTEN® cable trough system increases efficiency in railway construction.

The seamlessly designed cable laying system enables the entire cable conduit system to be constructed quickly and to high levels of precision. Cable laying and handling is significantly easier thanks to the lightness of the components. What's more, FILCOTEN® concrete components are a sustainable and environmentally friendly solution, produced using an innovative manufacturing process and state-of-the-art, 100% recyclable materials.

Applications

- Railway and underground railway areas and along rail tracks.
- For cabling to all electrical systems, signalling and energy supply systems and telecoms systems.
- Can also be used to create edging thanks to solid covers.

The benefits at a glance:

- **Light, stable and smooth**
A lightweight and high-stability component. The smooth surface makes it easier to pull cabling through.
- **Tongue and groove system**
Enables cables to be laid to a high degree of dimensional accuracy and straightness. The troughs are laid from top to bottom, preventing them shifting sideways and removing the need to fill gaps with grit.
- **Efficient laying**
Simple and fast mitre cuts speed up the laying process so that tracks can be reopened sooner.
- **Fixing bags**
Thanks to innovative FILCOTEN® production and moulding technology, we have been able – for the first time ever – to design fixing bags for a concrete trough body, guaranteeing an even more secure hold in the road bed.

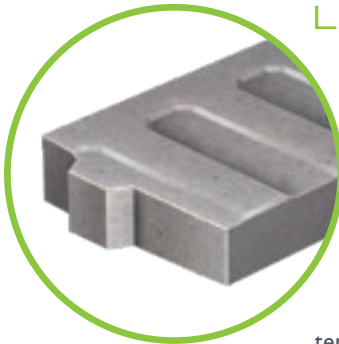
FILCOTEN® cable trough = more units on the truck = lower CO2 footprint per unit

For paths that
are the goal –
and for all other
streets as well.



**Our traffic systems
make streets simply safer.**

There's more and more traffic on our streets today – and that does not remain without consequences. The road surface as well as the road shoulders and the guide post foundations are increasingly stressed. As a consequence, damages or even complete destructions frequently occur. The consequence: increasing costs for street maintenance and increasing safety risks for all road users. BG has developed various systems against that to make our streets safer and more economical.



LEFIX® – when more safety meets fewer costs.

The LEFIX® shoulder slab is a prefabricated concrete component for the protection of the shoulder. Its innovative construction not only avoids a breaking off of the soft shoulder but it also prevents pollution of the roadway. Rainwater can run off in a controlled manner, the street dries faster and becomes safer. Furthermore, when driving on the road shoulder, the end of the roadway width is signalled to the road users.

Maintenance-free top quality.

On top of that, LEFIX® prevents road damages, is practically maintenance-free and thus diminishes the need for reconstruction. Costs and working hours are saved.

Reflector products – an offer that sets a signal.

True to our motto to continuously develop new and innovative products we offer state-of-the-art reflector products as addition to our product range. An example are the new kerb and pavement stones with reflective elements that ensure top visibility of obstacles in bad visibility conditions.



Reflector post bases for guide posts and traffic signs – the strong partner for more safety.

Our reflector post stones provide guide posts and traffic signs rotation-proof, maximum stability. The result: even more guiding and warning effect in bad visibility conditions and thus an active contribution to the traffic safety on the streets.

Cutting-edge technology knows no boundaries.



BG Production Sites:

Austria

Slovakia

Romania

Russia

BG Distribution Company:

Canada

Czech Republic

Hungary

Poland

United States of America

That is why we work for you around the clock, all over the world.

Success and quality get around – in our case all over the world. Our drainage systems, railway construction regulating components and traffic systems ensure dry, safe streets and efficient railway tracks on almost all continents. For this reason, you can purchase BG products in more than 30 countries. And since we like to be close to our customers, we have by now founded 13 subsidiaries.



BG Distribution Partners:

Belgium	Germany	Macedonia	Slovenia
Bulgaria	Greece	Montenegro	Sweden
Croatia	Italy	Netherlands	Switzerland
Denmark	Ireland	Norway	United Kingdom
Finland	Kosovo	Portugal	USA
France	Luxemburg	Serbia	

«What **strong leadership** means?»



Karl-Heinz Gramlich
Director Sales & Marketing
karl-heinz.gramlich@bg-company.com

Bernhard Knobloch
Managing Director
bernhard.knobloch@bg-company.com



GRASPOINTNER
Sustainable innovation.

«Playing for the team.»

The BG-Graspointner
board of management.



Klemens R. Wiese
Group Managing Director
klemens.wiese@bg-company.com

Josef Speer
Director Sales
josef.speer@bg-company.com



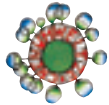
GRASPOINTNER
Sustainable innovation.

BG-Graspointner GmbH
Gessenschwandt 39
4882 Oberwang
AUSTRIA

Tel.: +43 6233/89 00-0
Fax: +43 6233/89 00-303

E-Mail: office@graspointner.at
Web: www.graspointner.at

Innovative strength & environmental-
awareness also applies for our print
products.



greenprint*
carbon positive printed

* Our contribution for the reforestation project Vienna BOKU in Ethiopia.

